

ARBIOM led consortium is awarded a €14 million funding for SYLPLANT project to support its industrial deployment in France

AGRICULTURAL BIOTECHNOLOGY | FOOD BIOTECHNOLOGY
FOOD SCIENCES | HUMAN NUTRITION | ANIMAL NUTRITION

HIGHLIGHTS

- €14 million European grant of private-public partnership “Circular Bio-based Europe - Joint Undertaking”
- Construction and operation of Arbiom’s first plant in France with support of the entire value chain

Paris, France, June 6th , 2023.

Arbiom, an agricultural-biotech company developing solutions to deliver next generation protein ingredients, announced today the kick-off of SYLPLANT project. This European collaborative project gathers 17 partners covering the entire food and feed value chains from feedstock manufacturers to retailers. It is co-funded by the Circular Bio-based Europe Joint Undertaking (CBE JU), a public-private partnership between the European Commission and the Bio-based Industries Consortium. SYLPLANT is built on the success of [Sylfeed](#), a 4-year project funded by the Bio-Based Industries Joint Undertaking (predecessor of CBE JU) where Arbiom successfully scaled-up its technology and validated the performance of SylPro®, its flagship ingredient. *“This factory paves the way to Arbiom’s industrial deployment. It will bring 10.000 tons/year of alternative, highly nutritional and sustainable protein to the market to answer the future food needs.”* **said Marc CHEVREL, CEO of Arbiom.**

This project’s importance at both France and European levels is underscored by the [France Relance funding obtained in 2022](#), and now the €14 million CBE JU grant for the next three years.

CONTEXT AND OBJECTIVES

With an estimated population of 8.5 billion of people by 2030, the world is facing the daunting challenge of meeting the growing demand for a sustainable production of food while improving its quality. The strong reliance on imports for protein consumption in Europe exemplifies this challenge and confirms the necessity to increase and develop European protein sovereignty with local alternatives, such as Arbiom products. **CBE JU Executive director Nicoló Giacomuzzi-Moore said:** *“CBE JU is very proud to co-fund this pioneering project. SYLPLANT is the perfect answer to ensure European food security and sovereignty and so contributes to the viability of the food system”.*

As part of SYLPLANT, the consortium will work on the sequent objectives for the next three years:

- Constructing & operating Arbiom's first plant in France to reach 10,000 ton per year of ingredient production.
- Validating the use of SylPro® in feed applications including aquafeed and petfood and gathering consumer insights.
- Developing the next generation of foods such as cheese analogs, meat-analogs, and specialized nutrition products with Arbiom's ingredient.



Figure 1: Arbiom's first plant design

A MULTISTAKEHOLDERS PROJECT

Through SYLPLANT, Arbiom brings together European experts of the entire value chain from feedstocks manufacturers to retailers to build the future of food. *"We are convinced that collaborating with strong market partners of the feed and food sectors will enable to accelerate the development of next generation ingredients."* according to **Amélie DROUAULT, VP of Business Development for Arbiom.**

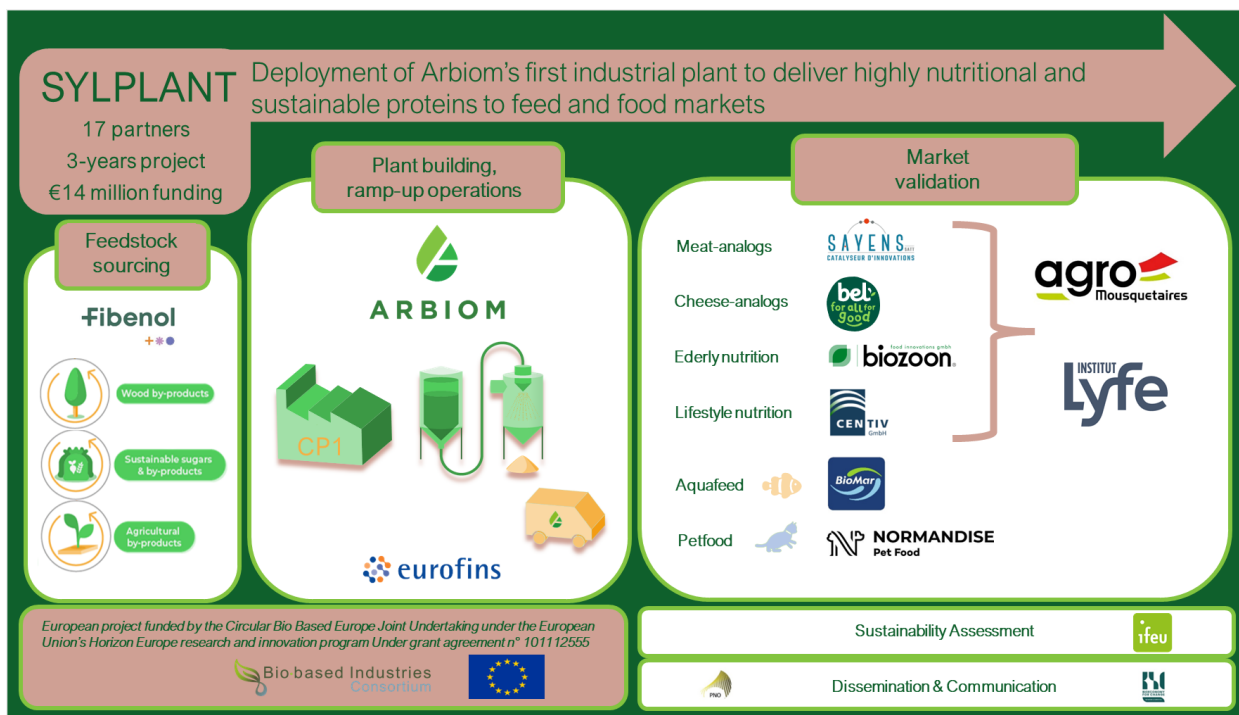


Figure 2: SylPlant project overview

The consortium includes:

- [ARBIOM](#)
- [FIBENOL](#)
- [CENTRE DE RECHERCHE ET D'INNOVATION DE L'INSTITUT LYFE \(EX INSTITUT PAUL BOCUSE\)](#)
- [SATT SAYENS](#)
- [BEL](#)
- [AGROMOUSQUETAIRES \(through 3 entities\)](#)
- [BIOZOOM GMBH](#)
- [CENTIV GMBH](#)
- [NORMANDISE PET FOOD](#)
- [BIOMAR AS](#)
- [EUROFINS FOOD TESTING FRANCE](#)
- [IFEU - INSTITUTE FOR ENERGY AND ENVIRONMENTAL RESEARCH HEIDELBERG](#)
- [BIOECONOMY FOR CHANGE](#)
- [PNO CONSULTANTS](#)

ABOUT ARBIOM

Arbiom is committed to feeding the world in a sustainable and healthy way. Driven by our values of Excellence, Inclusivity and Sustainability, our passionate team leverages the power of fermentation to deliver next generation protein ingredients by tapping into nature-based solutions.

Arbiom truly adds to the food supply by creating rather than redistributing proteins. Our products are purpose-grown, natural, and protein-rich. With excellent functional and sensory properties, they are a perfect solution to healthy human and animal nutrition.

Arbiom's first industrial project is underway in France, providing a safe and secure supply of 10,000 tons of product per year to customers and partners.

[Arbiom.com](https://www.arbiom.com)

ABOUT CBE-JU

The Circular Bio-based Europe Joint Undertaking (CBE JU) is a €2 billion partnership between the [European Union](#) and the [Bio-based Industries Consortium \(BIC\)](#) that funds projects advancing competitive circular bio-based industries in Europe.

CBE JU is operating under the rules of [Horizon Europe](#), the EU's research and innovation programme, for the 2021-2031 period.

ABOUT SYLPLANT

SYLPLANT is a collaborative project of 17 partners led by Arbiom which aims to deploy Arbiom's sustainable and highly nutritional ingredients into feed and food markets. The project gathers the entire food and feed value chain from feedstock manufacturers to retailers. It received a €14 million grant from the Circular Bio-based Europe Joint Undertaking under the Grant Agreement 101112555.

SYLPLANT will lead to the construction and the operation of Arbiom's first plant in France.

KEY FIGURES

Grant: € 14 million

Total budget cost: € 23 million

Duration: 36 months, from June 2023 to May 2026

PRESS CONTACTS:

Amélie DROUAULT

VP Business development of Arbiom
adrouault@arbiom.com

Angel GUYOT

EU Projects and Communications Officer at B4C
a.guyot@bioeconomyforchange.eu